

PAY-FOR-A-DAY OF CAMP!!

Camp operational costs are approximately \$614,000. About \$300,000 of that number must be raised in gift income. The camp is asking friends to consider paying for the cost per day of unmet needs or some portion of the costs that are not met in the camp budget. The Pay-for-a-Day program provides a way to meet these important needs: *

Pay for a month	\$25,000
Pay for a week	\$5,770
Pay for one day	\$822
Pay for a half-day	\$411
Pay for a quarter-Day	\$206
Pay for an eighth-day	\$103
Pay for a sixteenth-day	\$52
Pay for a single hour	\$34

**These are rounded numbers*

Remember to check www.manatawnytravel.com for your travel

Camp Manatawny



Wish Book

A Christian camp dedicated to serving people

Tree of Life

A friend of camp has donated a beautiful brass and copper tree to encourage giving. Over the next three years, donors at the levels listed below will be able to inscribe special messages or honor loved ones on leaves and stones in Garrett Hall. This project begins on November 15, 2008.

\$500 gift-bronze leaf-inscribe up to 35 letters and spaces
\$1000 gift-silver leaf-inscribe up to 40 letters and spaces
\$5000 gift-gold leaf-inscribe up to 45 letters and spaces
\$15,000 gifts-small stone under tree-up to 60 letters
\$30,000 gifts-medium stone under tree-up to 85 letters
\$50,000 gifts-large stone under tree-100 letters
\$100,000 gifts-larger stone-100 letters



For additional details e-mail: dedwards@dejazzd.com
or go to www.manatawny.org

CAMPSHIPS

Help a child to go to camp...



\$230 provides a campship for a child!!

Honor and Memorial Gifts

One of the joys of giving is the opportunity to honor someone, whether family, friend, or a deceased loved one. Camp Manatawny is offering new opportunities to honor those whom you hold dear. Many will appreciate being honored at a place where God is glorified while serving our youth. Make an honor or memorial gift of any size and it will be listed in a future issue of Manatawny Trails.

Order Your Camp Calendar Now!!

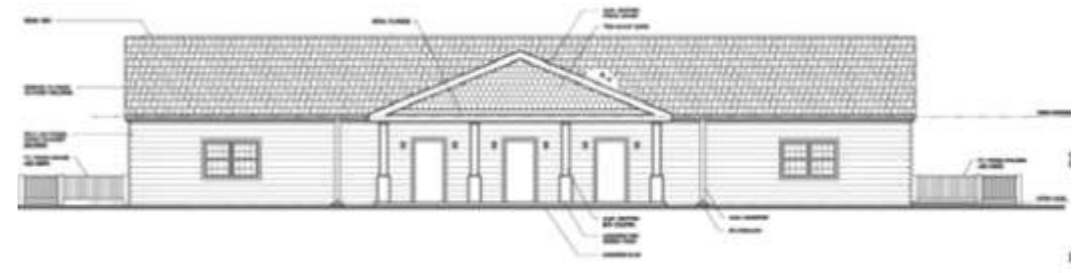
Enjoy camp all year long while seeing photos each month of favorite camp activities. Keep track of all your important events. Get the new Camp Manatawny 09 calendar!! Be sure to buy several to use as gifts for Christmas and birthdays. It is not only a great calendar but a chronicle of our wonderful year at camp! Go to www.manatawny.org for details.



2009 Camp Calendar

The Bathhouse Project

The Bath house project has been in the works for at least a couple of years. The board has made some modifications to the building and it is being presented to an architect for revisions shortly. A more practical version will be built and it is projected to be underway by March 2009. With continued prayers and your support, it should be completed, Lord willing, in time for the summer sessions. Some funding is still needed.



Updated Plans Available Soon

Camp Life is Faith Inspiring!



Planned Giving Opportunities

There are many ways to give to camp now and in the future. Consider these options:

1. The new IRA Rollover for people 70 1/2 and older is an excellent source of charitable giving. It is an opportunity in 2008 and 2009 to draw money out of an IRA up to \$100,000 without penalty and no taxable consequence. Those who are over 59 1/2 may also draw money out without penalty, but should consult your financial advisor to see if there are any tax considerations.
2. **Consider putting Delaware Valley Christian Camp in your estate plan for a child's portion.** If you have two children consider making camp your third child and give that portion to camp (usually a percentage of your estate.) This will help insure the future of camp. Be sure to keep your will or trust updated with your plans.
3. Life Insurance policies are a great source of charitable gifting, both now and in your estate. If you have a policy that is no longer needed, the advancement office would like to talk with you about some excellent opportunities for you and for camp with regard to your policy.
4. Giving both appreciated securities and securities that have lost value have gifting opportunities to consider. Call to discuss these possibilities.

Call Doug Edwards at 610-689-0173 to talk about these ideas and others.